

User Manual

Release 1.4

PAT-Connect-16

Adapter box for flexible wiring connections



Disclaimer

EL-Cell GmbH makes no assurances or warranties with respect to this manual and, to the extent permitted by law, limits its liability for violation of any implied warranty to the substitution of this manual for another. In addition, EL-Cell GmbH reserves the right to revise this publication at any time without notice to anyone.

The information provided in this documentation includes general descriptions and/or technical characteristics regarding the performance of the equipment described herein. This documentation cannot serve as a proper evaluation of the suitability or reliability of the equipment for any specific application by any user and should not be relied upon as a substitute for such evaluation. It is the responsibility of each such user or installer to conduct an appropriate and complete risk assessment, evaluation and testing of the equipment with respect to their specific application. EL-Cell GmbH cannot be held responsible or liable for any misuse of the information contained herein.

All relevant state, regional and local safety regulations must always be complied with when installing and using this device. For safety reasons and to ensure compliance with the documented system data, only the manufacturer is authorized to perform repairs on components.

Disregarding this information may result in injury or damage to the equipment.

All rights reserved. No part of this publication may be reproduced, processed, or transmitted in any form, including photocopying, recording, or any other electronic or mechanical process, without the written permission of the publisher. Requests for permission must be made in writing to the publisher at the address written below.

Manufacturer and customer service

EL-Cell GmbH
Tempowerkring 8
21079 Hamburg – Germany

Telephone: +49 40 79012-734
Telefax: +49 40 79012-736
Email: info@el-cell.com
Website: el-cell.com

Technical support

Telephone: +49 40 79012-734
Email: support@el-cell.com
Website: el-cell.com/support/technical-support/

Please always quote the serial number on the nameplate when making customer service inquiries.

Shipping address for repairs

EL-Cell GmbH
Tempowerkring 8
21079 Hamburg - Germany

Please be sure to contact our customer service department before making a return. We will not open or process shipments without a completed decontamination report or RMA.

Content

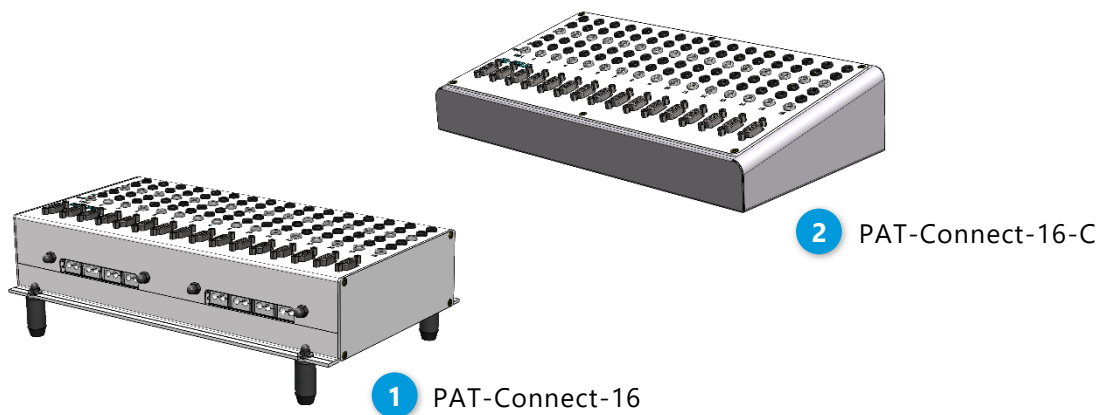
1 Product description	5
2 Technical data	6
3 Installation.....	7
4 Cleaning.....	10
5 Unpacking	11
6 Available Accessories	11
7 Warranty	12

1 Product description

The PAT-Connect-16 box serves the most flexible connection between an external battery tester or multi-channel potentiostat and the PAT-Stand-16/PAT-Chamber-16. The individual connection between a given PAT-Cell in the stand /chamber and the corresponding channel of the battery tester can be configured via an array of banana sockets at the front of the connection box. That gives the freedom to choose between the various full and half cell control modes.

In addition, the PAT-Connect box feeds through all the auxiliary analog signals provided by the PAT series test cells - temperature, pressure and buffered half cell voltages - and makes these signals available to the external battery tester.

Two different versions of the PAT-Connect-16 are available:

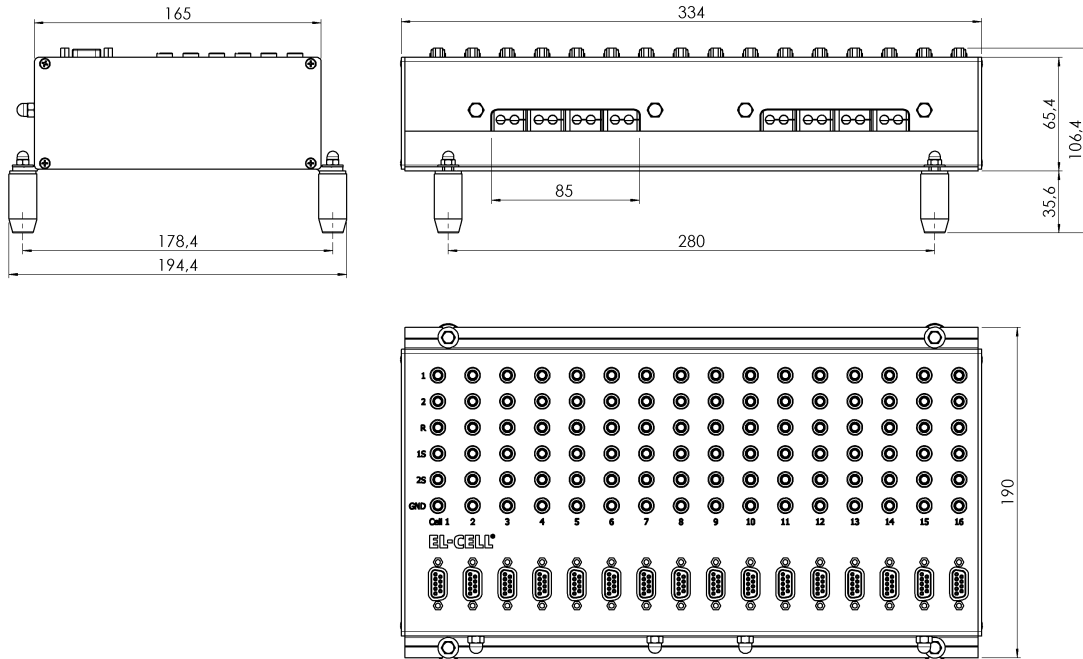


- 1 The PAT-Connect-16 for connection to the PAT-Stand-16. This version is for wall mounting or placing on the bench.
- 2 The PAT-Connect-16 C for connection to the PAT-Chamber-16. This version is permanently attached to the PAT-Chamber.

Features

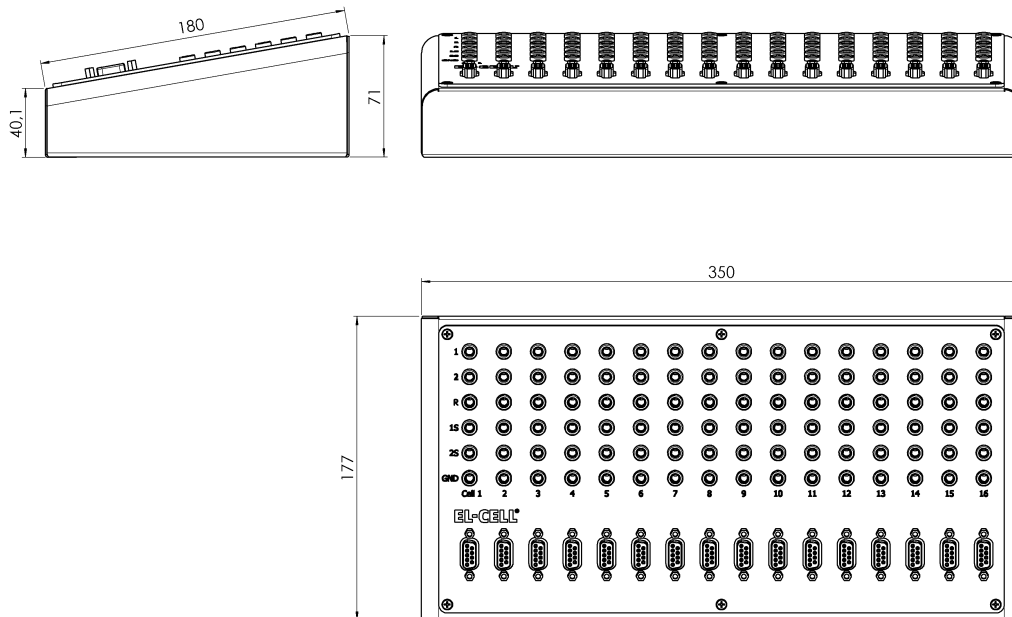
- Easy-to-access banana sockets for plug-in of the cell cables of the battery tester / potentiostat (sockets available for WE, WE-Sense, RE, CE, CE-Sense, and GND)
- Sub-D Connector for optional auxiliary signals: buffered half cell voltages, temperature, sensor signals
- Available as modular box (PAT-Connect-16) to be placed on the bench or fixed on the wall, or as an attachment on top of the PAT-Chamber-16 C (PAT-Connect-16 C)

2 Technical data



Dimensions PAT-Connect-16:

334 mm (width) x 195 mm (depth) x 106 mm (height)



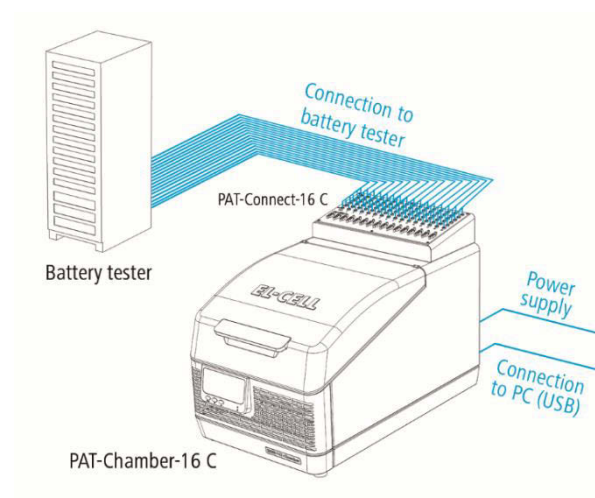
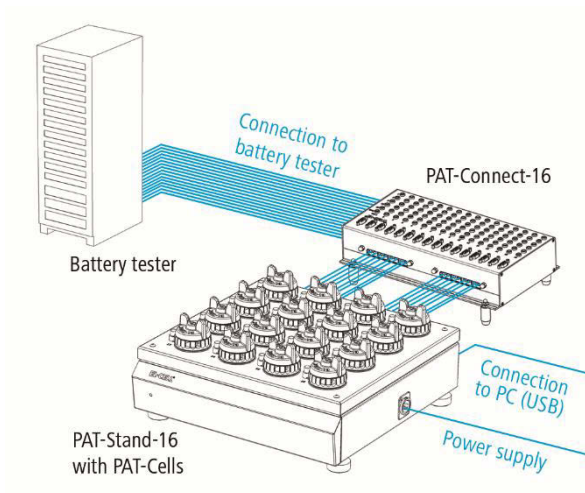
Dimensions PAT-Connect-16 C:

350 mm (width) x 177 mm (depth) x 75 mm (height)

3 Installation

When purchased in combination with a PAT-Stand-16 or PAT-Chamber-16, the PAT-Connect box comes always readily connected upon delivery. The connection cables between docking station and connect box are available in different lengths:

- PAT-Connect-16 Cable Set (10/10), 700 mm length, [ECE1-00-0152-A](#)
- PAT-Connect-16 Cable Set (10/10), 1000mm length, [ECE1-00-0152-B](#)
- PAT-Connect-16 Cable Set (10/10), 2000 mm length, [ECE1-00-0152-C](#)



3.1 PAT-Connect-16 connection

4mm banana sockets

1 (Lower electrode)

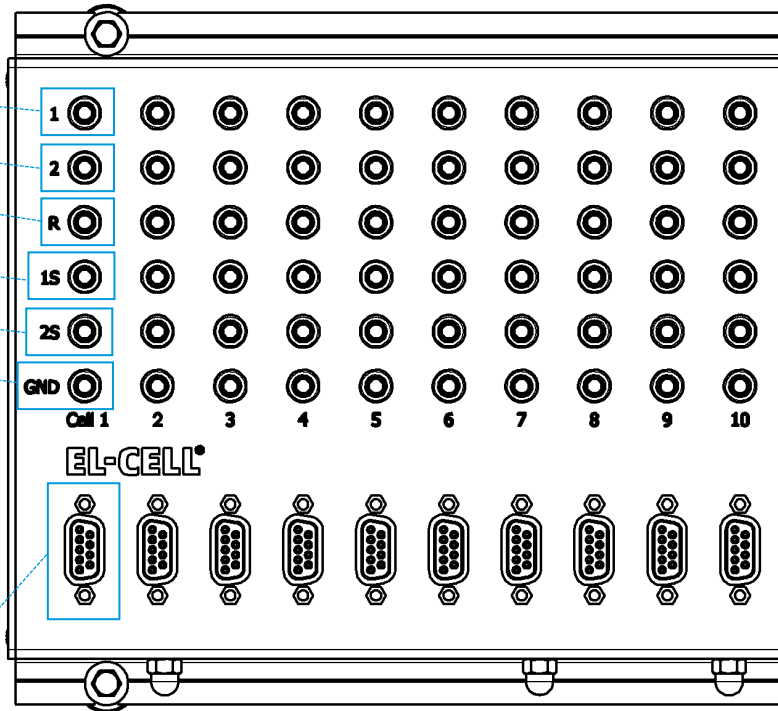
2 (Upper electrode)

RE (Reference electrode)

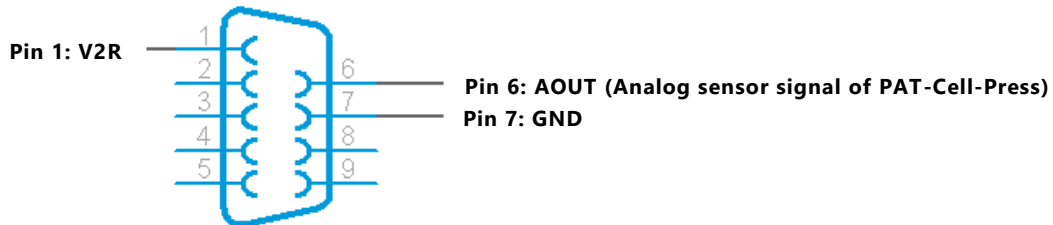
1S (Sense 1)

2S (Sense 2)

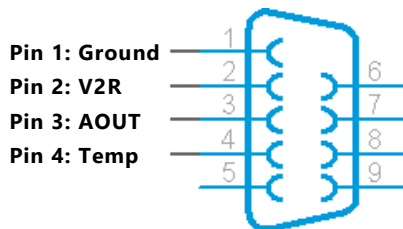
GND (Ground)



Sub-D-Connector (new version, serial no. 000-716 and higher)



Sub-D-Connector (old version)



3.2 Control modes

The following schemes show how to connect, for a given test channel, the cell cable of the external battery tester or potentiostat to the banana sockets at the PAT-Connect box. Note that the naming conventions for the cell cable signals, and the number of signals (between 3 and 5), may differ between battery testers. The leads WE, CE and RE are always present, albeit possibly with other names.

1. Full cell control

Battery tester / potentiostat	WE	CE	RE	WE Sense	CE Sense
PAT-Connect-16	1	2	2S	1S	2S

2. Half cell control 1 vs R (lower half cell)

Battery tester / potentiostat	WE	CE	RE	WE Sense	CE Sense
PAT-Connect-16	1	2	R	1S	2S

3. Half cell control 2 vs R (upper half cell)

Battery tester / potentiostat	WE	CE	RE	WE Sense	CE Sense
PAT-Connect-16	2	1	R	2S	1S

The connection namings mentioned in the operation mode tables can differ from the used potentiostat. To view specific naming conventions from selected different manufacturers see the table below.

Important note: The application of our test cells is not limited to the potentiostats listed below. Our test cells can be used with all other potentiostats as well.

3.3 Cable colors and naming conventions

Exemplary potentiostat	WE	WE-Sense	CE	CE-Sense	RE
BioLogic (i.e. VSP, VMP3)	WE Red cable	Ref1 Red cable	CE Blue cable	Ref3 Blue cable	Ref2 White cable
Gamry Instruments (i.e. Reference 3000™)	Green cable	Blue cable	Red cable	Orange cable	White cable
Ivium Technologies (i.e. IviumStat)	WE1 Red cable	S White cable	CE Black cable	-	RE Blue cable
Metrohm Autolab (i.e. PGSTAT Series)	WE Red cable	S Red cable	CE Black cable	-	RE Blue cable
Princeton Applied Research (i.e. PARSTAT 2273)	Green cable	Grey cable	Red cable	-	White cable

4 Cleaning

Wipe the PAT-Connect-16 with a moist tissue. Do not use aggressive chemicals for cleaning. Protect the device from dust and moisture.

5 Unpacking

Check the contents of the packages against the list given below to verify that you have received all of the required components. Contact EL-CELL, if anything is missing or damaged.

NOTE: Damaged shipments must remain within the original packaging for freight company inspection.

List of components

- PAT-Connect-16 [ECE1-00-0130-A](#) or PAT-Connect-16 C [ECC1-03-0130-A](#)

NOTE: The cables for connection between PAT-Chamber-16/PAT-Stand-16 and the PAT-Connect-16 must be ordered separately. The same applies for the available plug adapters 4 mm to 2 mm ([ELT9081/X](#)).

6 Available Accessories

- Adapter male 4 mm to female 2 mm, black (10pcs) [ELT9081/X](#)

7 Warranty

For a period of one year from the date of shipment, EL-Cell GmbH (hereinafter Seller) warrants the goods to be free from defect in material and workmanship to the original purchaser.

During the warranty period, Seller agrees to repair or replace defective and/or nonconforming goods or parts without charge for material or labor, or, at the Seller's option, demand return of the goods and tender repayment of the price. Buyer's exclusive remedy is repair or replacement of defective and nonconforming goods, or, at Seller's option, the repayment of the price.

Seller excludes and disclaims any liability for lost profits, personal injury, interruption of service, or for consequential incidental or special damages arising out of, resulting from, or relating in any manner to these goods.

This Limited Warranty does not cover defects, damage, or nonconformity resulting from abuse, misuse, neglect, lack of reasonable care, modification, or the attachment of improper devices to the goods. This Limited Warranty does not cover expendable items. This warranty is void when repairs are performed by a non-authorized person or service center. At Seller's option, repairs or replacements will be made on site or at the factory. If repairs or replacements are to be made at the factory, Buyer shall return the goods prepaid and bear all the risks of loss until delivered to the factory. If Seller returns the goods, they will be delivered prepaid and Seller will bear all risks of loss until delivery to Buyer. Buyer and Seller agree that this Limited Warranty shall be governed by and construed in accordance with the laws of Germany.

The warranties contained in this agreement are in lieu of all other warranties expressed or implied, including the warranties of merchantability and fitness for a particular purpose.

This Limited Warranty supersedes all prior proposals or representations oral or written and constitutes the entire understanding regarding the warranties made by Seller to Buyer. This Limited Warranty may not be expanded or modified except in writing signed by the parties hereto.