

Quick Start Guide

Release 1.00

EL-Software: Experiment Setup Workflow

The information in this manual has been carefully checked and believed to be accurate; however, no responsibility is assumed for inaccuracies.

EL-Cell GmbH maintains the right to make changes without further notice to products described in this manual to improve reliability, function, or design. EL-Cell GmbH does not assume any liability arising from the use or application of this product.

EL-Cell GmbH

Tempowerkring 8

21079 Hamburg - Germany

phone: +49 (0)40 790 12 734

fax: +49 (0)40 790 12 736

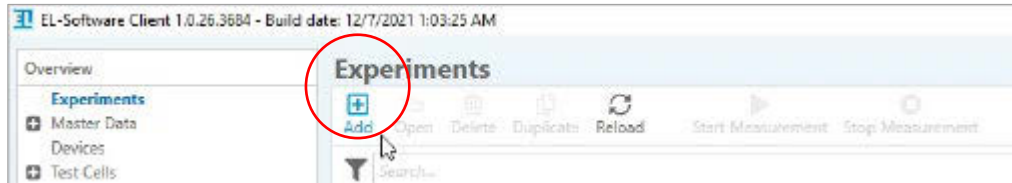
e-mail: info@el-cell.com

web: www.el-cell.com

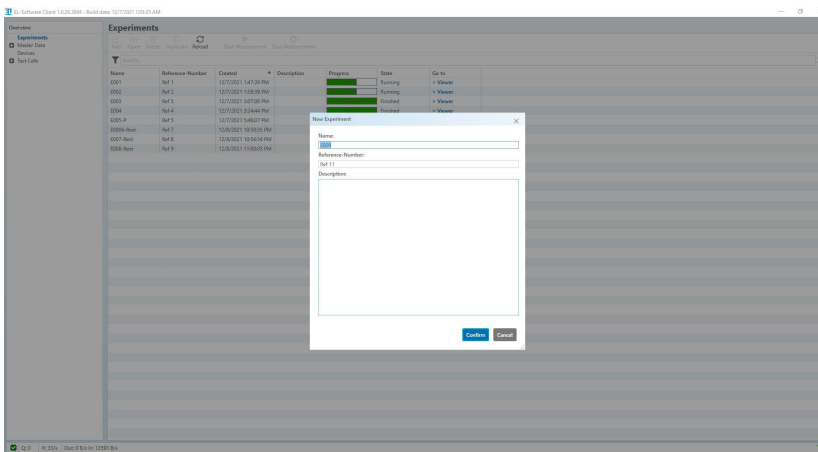
1 How to set up an experiment in EL-Software

In order to start a new experiment, insert at least one PAT-Cell (or other device with PAT-Button) into a free channel of your PAT-Tester and follow these steps in EL-Software

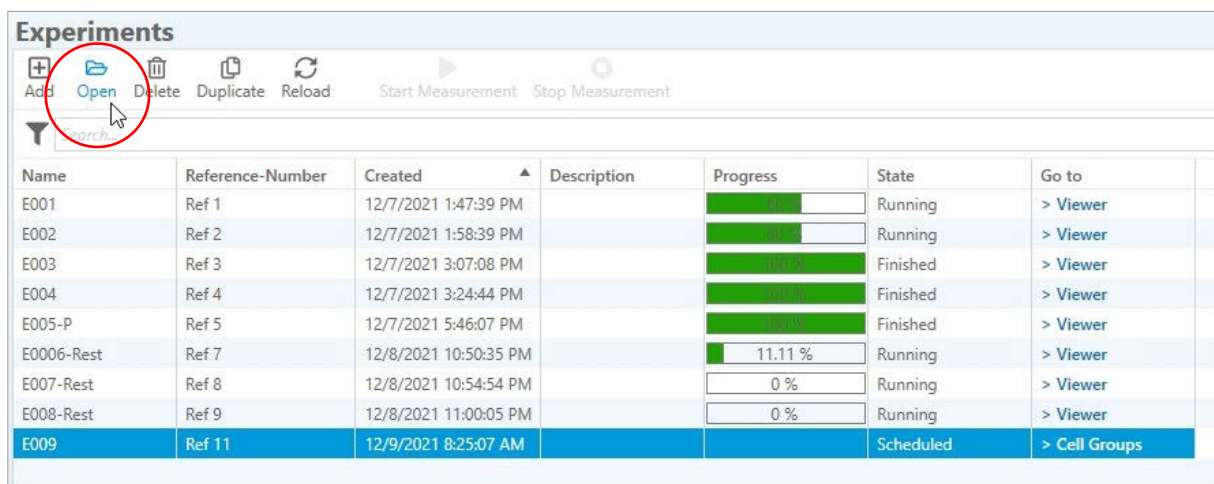
1. Select experiments in the tree view on the left side, then click 'Add' in the main tool bar.



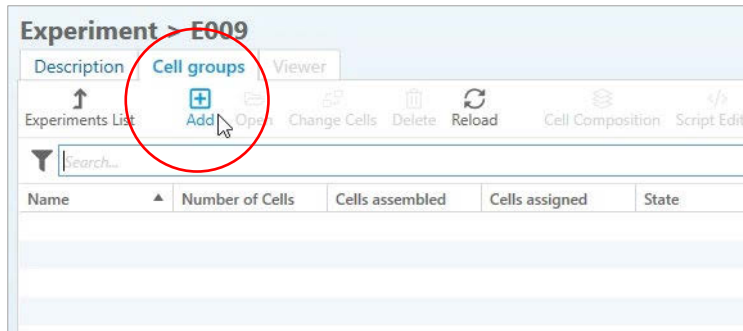
2. Enter the name of the experiment and optionally a description.



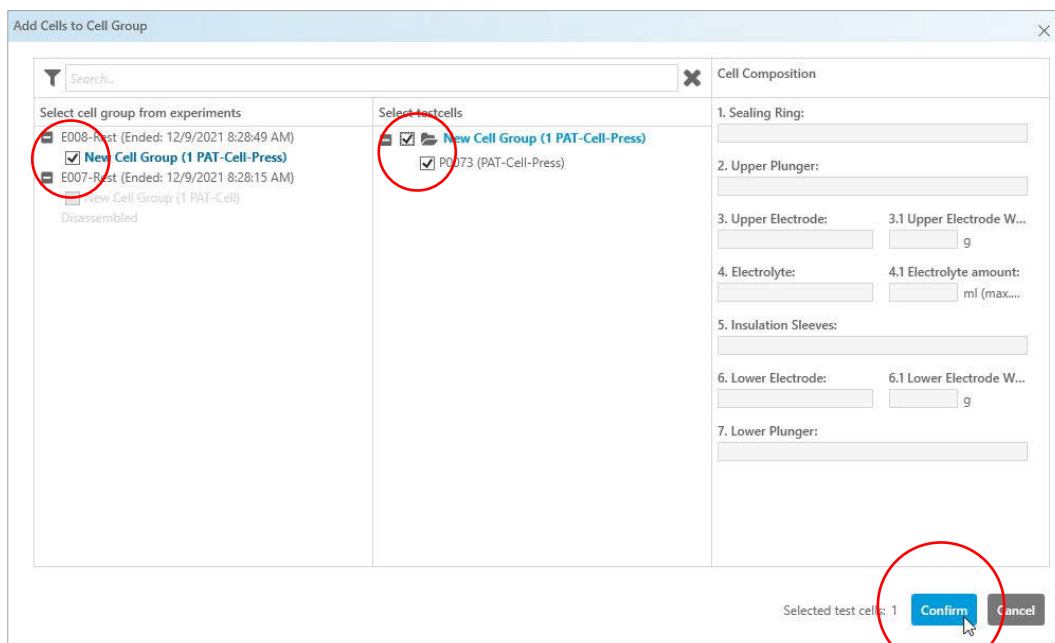
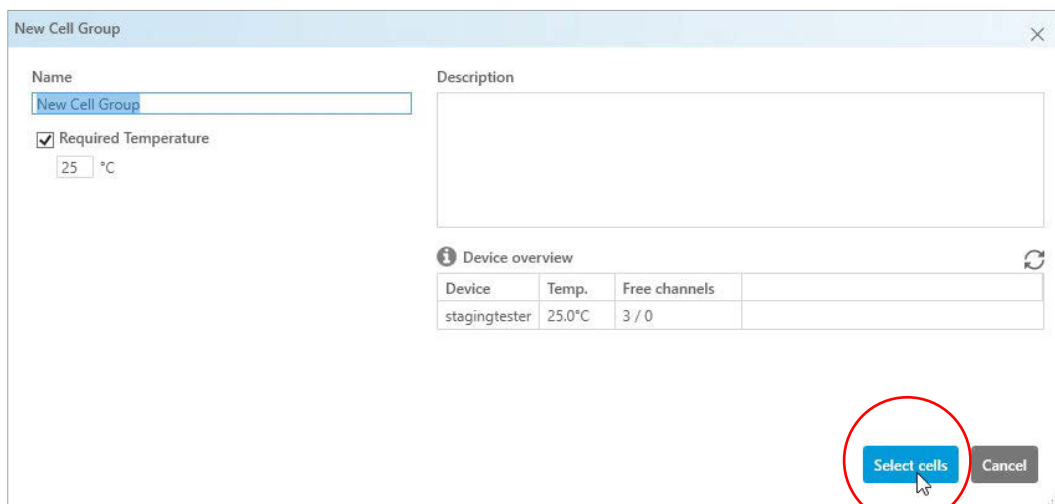
3. Open the new experiment.



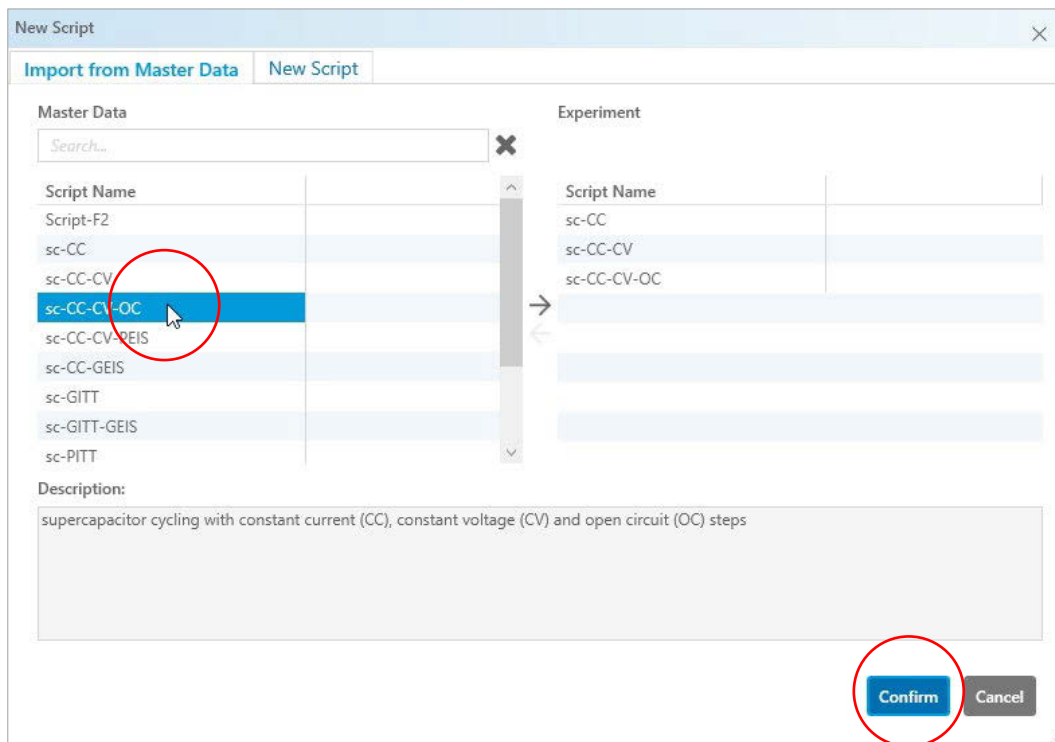
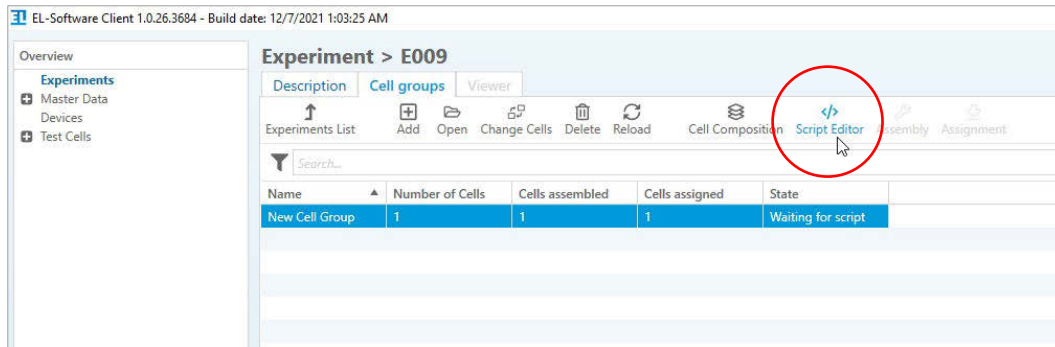
4. Make sure that the Cell Groups tab is active and press 'Add' to create a new cell group. An experiment in EL-Software requires at least one cell group with one test cell.



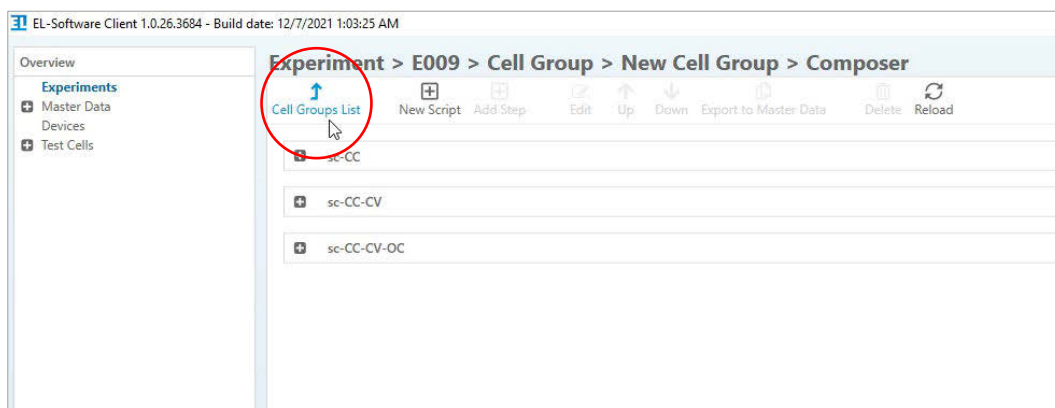
5. Enter the name of the cell group and press 'Select cells'. In the following dialogue, select at least one cell for each of your cell groups. Press 'Confirm' to add the cells.



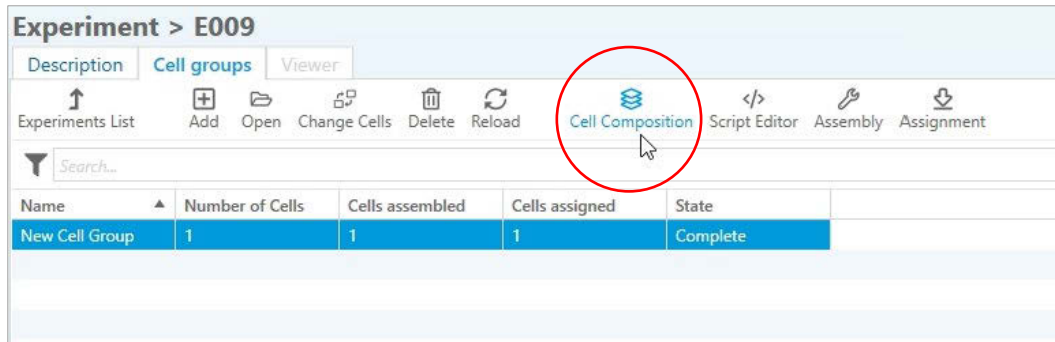
6. Click 'Script-Editor' and then either 'Import a script from Master Data' or define a 'New Script'. Select at least one script for each cell group.



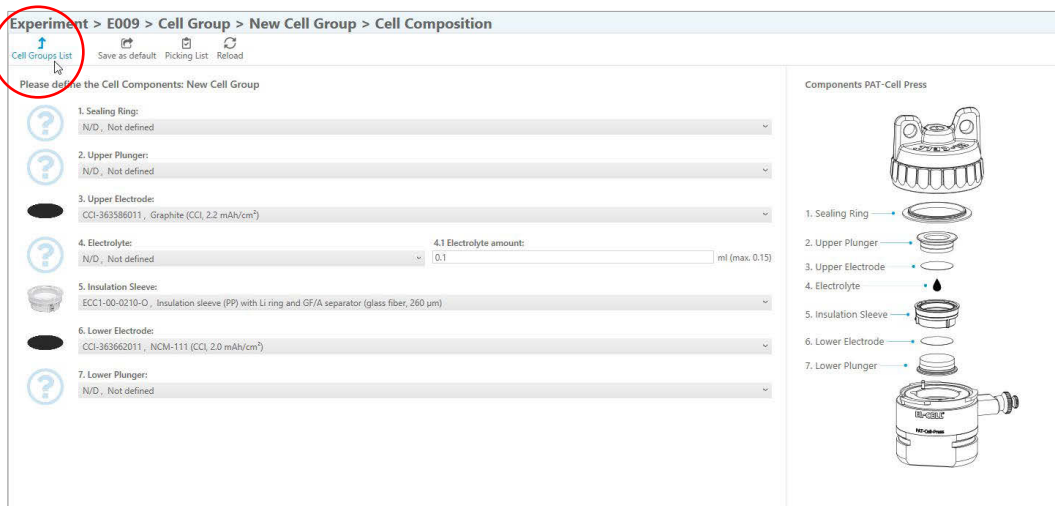
7. Press 'Cell Groups List' to leave the script editor and go back to our experiment.



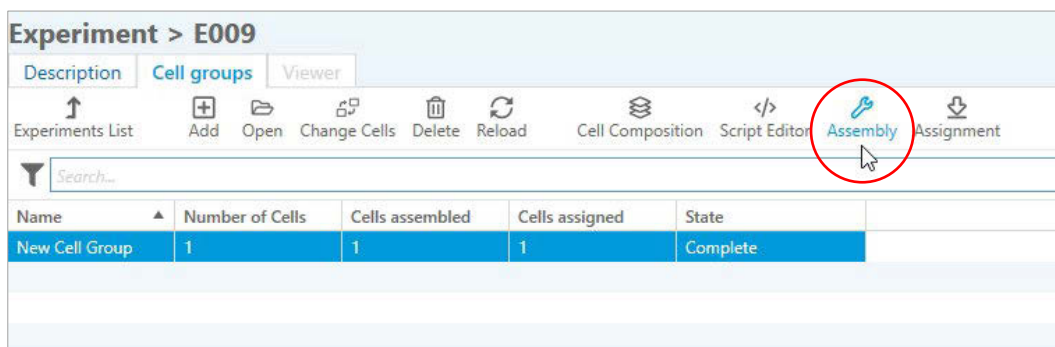
8. Click 'Cell Composition' (optional). The cell composition applies to all members of a cell group.



9. In the Cell Composition, you can select the components used in the test cells and create a picking list. Press 'Cell Groups List' to go back to the experiment overview.



10. Click 'Assembly' (optional) to enter the electrode weights for each test cell. The electrode weights can differ between members of a cell group.



Experiment > E009 > Cell Group > New Cell Group > Assembly

Cell Groups List Acquisition List Reload

Cell Tag	Lower electrode weight [g]	Upper Electrode weight [g]	Is Assigned to
P0073	0.02	0.04	stagingtester, Channel 13

Assembly Information
Please enter the required data to complete the cell assembly:

1 Upper Electrode
CC-363586011, Graphite (CC, 2.2 mAh/cm²)
Enter weight: 0.02 g

2 Lower Electrode
CCI-363662011, NCM-111 (CCI, 2.0 mAh/cm²)
Enter weight: 0.04 g

3 Cell Tag: P0073

Optional: In the experiment overview click 'Assignment' to assign the test cells to free channels of the PAT-Tester (**only for newly inserted cells without electronic cell tag (PAT-Button)**)

11. Press 'Experiments list' to go back and then click 'Start Experiment'. The Start button only becomes active when the experiment is completely defined.

Experiment > E009

Description Cell groups Viewer

Experiments List Add Open Change Cells Delete Reload Cell Composition Script Editor Assembly Assignment

Search...

Name	Number of Cells	Cells assembled	Cells assigned	State
New Cell Group	1	1	1	Complete

Experiments

Add Open Delete Duplicate Reload Start Measurement Stop Measurement

Search...

Name	Reference-Number	Created	Description	Progress	State	Go to
E001	Ref 1	12/7/2021 1:47:39 PM		100.00 %	Running	> Viewer
E002	Ref 2	12/7/2021 1:58:39 PM		100.00 %	Running	> Viewer
E003	Ref 3	12/7/2021 3:07:08 PM		100.00 %	Finished	> Viewer
E004	Ref 4	12/7/2021 3:24:44 PM		100.00 %	Finished	> Viewer
E005-P	Ref 5	12/7/2021 5:46:07 PM		100.00 %	Finished	> Viewer
E006-Rest	Ref 7	12/8/2021 10:50:35 PM		11.11 %	Running	> Viewer
E007-Rest	Ref 8	12/8/2021 10:54:54 PM		100.00 %	Running	> Viewer
E008-Rest	Ref 9	12/8/2021 11:00:05 PM		100.00 %	Finished	> Viewer
E009	Ref 11	12/9/2021 8:25:07 AM			Definition Complete, Scheduled	> Cell Groups

12. Congratulations, you have started your experiment! Switch to the cell viewer to monitor the measurement.

Experiments						
<div><div><div><div><div></div></div><div>Add</div></div><div><div><div></div></div><div>Open</div></div><div><div><div></div></div><div>Delete</div></div><div><div><div></div></div><div>Duplicate</div></div><div><div><div></div></div><div>Reload</div></div><div><div><div></div></div><div>Start Measurement</div></div><div><div><div></div></div><div>Stop Measurement</div></div></div></div>						
<div><div><div></div></div><div>Search...</div></div>						
Name	Reference-Number	Created	Description	Progress	State	Go to
E001	Ref 1	12/7/2021 1:47:39 PM		<div><div></div></div>	Running	> Viewer
E002	Ref 2	12/7/2021 1:58:39 PM		<div><div></div></div>	Running	> Viewer
E003	Ref 3	12/7/2021 3:07:08 PM		<div><div></div></div>	Finished	> Viewer
E004	Ref 4	12/7/2021 3:24:44 PM		<div><div></div></div>	Finished	> Viewer
E005-P	Ref 5	12/7/2021 5:46:07 PM		<div><div></div></div>	Finished	> Viewer
E0006-Rest	Ref 7	12/8/2021 10:50:35 PM		<div><div></div>11.11 %</div>	Running	> Viewer
E007-Rest	Ref 8	12/8/2021 10:54:54 PM		<div><div></div></div>	Running	> Viewer
E008-Rest	Ref 9	12/8/2021 11:00:05 PM		<div><div></div></div>	Finished	> Viewer
E009	Ref 11	12/9/2021 8:25:07 AM		<div><div></div></div>	Running	> Viewer